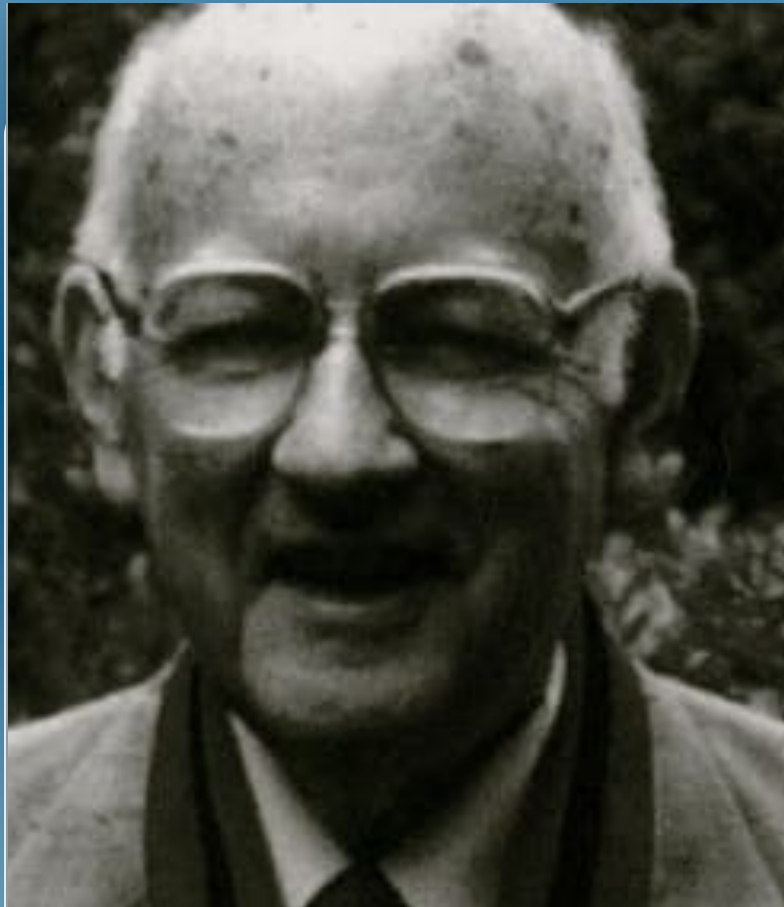


The E. Paul Torrance International Roundtable on Creative Thinking aims to refresh the work and legacy of Dr Torrance internationally especially among today's crop of creativity enthusiasts and scholars, push the boundary of knowledge on creative thinking and giftedness as well as increase knowledge sharing within and beyond the creativity field.



Dr Ellis Paul Torrance—8 October 1915-12 July 2003:
Father of Modern Creativity

9th Annual E. Paul Torrance International Roundtable on Creative Thinking

Topic:
“E. Paul Torrance:
Creativity Man & His
Legacy 20 Years On”

Date: Tuesday 25 July
2023

Venue: Rafael Hotel
Piramides, Madrid,
Spain & Online

Time: 16:00-18:00

Bios of the Torrance Roundtable, RDCA SIG Panellists & FRC Lecture Series keynoters on pp. 2-4



Torrance Keynoters L-R: Mark Runco, Stanley Krippner, Fredricka Reisman, Kubos Neethling & Bonnie Cramond



RDCA Panellists L-R: Craig Bach, Larry Keiser (Moderator)
Mitch Marcello & Pete Ophoven

FRC Transactional Research Lecture Series



Speakers L-R:
Bonnie Benjamin-Phariss
&
Jeff Westphal

KEYNOTE SPEAKERS FOR THE 2023 TORRANCE ROUNDTABLE



Keynoter: Mark Runco

Mark Runco is the Founder of the *Creativity Research Journal* and Director of Creativity Research and Programming at Southern Oregon University, USA. Formerly, he was the E. Paul Torrance Professor of Creativity Studies and Gifted Education at the University of Georgia College of Education. Mark began his teaching career as an assistant professor of psychology at the University of Hawaii, Hilo. He then taught at Cal State Fullerton for 22 years. He was also an adjunct professor at the Norwegian School of Economics and Business Administration for nearly 15 years and currently lectures regularly at Universidad de Cantabria in Spain and Shaanxi Normal University in Xi'an, China. He was a distinguished consulting faculty member at the Saybrook Graduate University in San Francisco. He has also held adjunct positions at Buffalo State University and remains Distinguished Research Fellow of the American Institute for Behavioral Research and Technology. Mark developed and still teaches seminars on creativity, including "Creativity: What It Is and What It Is Not," "The Assessment of Creativity," "Creative Cognition," and "Social Contexts for Creativity." He is past president of Division 10 (Psychology, Art, Creativity, and Aesthetics) of the *American Psychological Association*. In 1988, Mark founded the *Creativity Research Journal*, which he still edits, and in 2014, he founded the new journal *Business Creativity and the Creative Economy*. He co-edited the *Encyclopedia of Creativity* in 1999 and 2011. In 2010, Mark published the "rCAB" (Runco Creativity Assessment Battery), a comprehensive battery of tests for the assessment of creativity. He has published approximately 200 articles, chapters, and books on creativity, its measurement and enhancement. His textbook *Creativity: Theories and Themes: Research, Development, and Practice* has been translated into six languages and was revised and expanded in 2014 and again in 2019.

Fredricka Reisman, PhD, Emerita Professor, is founder of Drexel University's School of Education. Dr. Reisman currently serves as Co-Director of the Drexel/Torrance Center while continuing to teach in the School's Creativity & Innovation programs, which she created, and to chair and serve on dissertation committees for doctoral students interested in the Creativity & Innovation concentration. Dr. Reisman received her PhD in Mathematics Education from Syracuse University. Prior to Drexel, Dr. Reisman served as



Keynoter: Dr Fredricka Reisman

Professor and Chair of the Division of Elementary Education at the University of Georgia; a grades 3 and 5 elementary, middle school, high school mathematics teacher in New York State; and a mathematics education instructor at Syracuse University.

Dr. Reisman has been awarded over \$14,800,000 private and government grants to support her research and teacher ed projects and has served as evaluator on funded engineering projects and numerous Pennsylvania and New York State university teacher certification programs. She has created several books, contributions to books, journal publications, and assessments that focus on mathematics learning and teaching and creativity applications including a 2021 co-authored book published by Routledge entitled *Using Creativity to Address Dyslexia, Dysgraphia, and Dyscalculia: Assessment and Techniques*. She has served since 2013 and continues as editor for the 2022 Knowledge, Innovation & Enterprise (KIE) international creativity focused organization conference book. Dr. Reisman was awarded the New Millennium Foundation Technology Award, the national 2002 Champion of Creativity Award by the American Creativity Association (ACA), and was the recipient of the 2017 National Association for Gifted Children E. Paul Torrance Award. She was honored in Spring 2020 by Drexel where the university-wide faculty creativity award has been renamed the "Freddie Reisman Faculty Scholarly and Creative Activity Awards". Dr. Reisman is Director of the Freddie Reisman Center for Translational Research in Creativity and Motivation (FRC) created in 2022 by a Drexel major donor. The FRC seeks to reduce the disconnect between research and practice including focus upon instructors' knowledge of and beliefs about creative learners and thus eliminate misunderstandings that stifle rather than nourish creative learners.

Stanley Krippner is Alan Watts Professor of Psychology at Saybrook University, California, USA. He has received Lifetime Career Awards for his research in dream studies, humanistic psychology, and parapsychology. He has authored or co-authored over 1,000 books, monographs, and articles on such topics as anomalous dreams, post-traumatic stress disorder, shamanism, hypnosis, creativity, and psychedelics. He is the recipient of the American Psychological Association's Award for Distinguished Contributions to the International Advancement of Psychology. He is the



Keynoter: Dr Stanley Krippner

co-author of the award-winning book "Personal Mythology" and the co-editor of another award-winning book, "Varieties of Anomalous Experience: Examining the Scientific Evidence."

Dr. Stanley Krippner has held faculty appointments at Akamai University, Fordham University, Kent State University, New York University, Saybrook University, Sofia University, the Universidade Holistica Internacional (Brasilia), the Instituto de Medicina y Tecnología Avanzada de la Conducta (Ciudad Juárez), and the California Institute for Integral Studies, where he holds the position of Affiliated Distinguished Faculty. He is a Fellow in five divisions of the American Psychological Association, and the past-president of two divisions (the Society of Psychological Hypnosis and the Society of Humanistic Psychology).

Formerly, Dr Krippner was director of the Maimonides Medical Center Dream Research Laboratory, in Brooklyn, New York, and (earlier) the director of the Kent State University Child Center in Kent, Ohio. Krippner is a pioneer in the study of consciousness, having conducted research for over 50 years in the areas of dreams, hypnosis, shamanism, and dissociation, often from a cross-cultural perspective, and with an emphasis on anomalous phenomena that seem to question mainstream paradigms. He is co-editor of *Holistic Treatment in Mental Health* (McFarland, 2020), *Integrated Care for the Traumatized* (Roman & Littlefield, 2019), *The Shamanic Powers of Rolling Thunder* (Bear/Inner Traditions, 2016), *Working with Dreams and PTSD Nightmares* (Praeger, 2016), *Varieties of Anomalous Experience: Examining the Scientific Evidence*, 2nd ed. (APA, 2014), *Mysterious Minds* (Praeger, 2010), *Debating Psychic Experience* (Praeger, 2010), *Perchance to Dream* (Nova Science, 2009), and co-author of *The Voice of Rolling Thunder* (Bear/Inner Traditions, 2012), *Post-Traumatic Stress Disorder: Biography of a Disease* (ABC-CLIO, 2012), *Demystifying Shamans and Their World* (Imprint Academic, 2011), *Extraordinary Dreams and How to Work with Them* (SUNY, 2002), *Personal Mythology* (Tarcher, 1988), and many other books.

Dr Krippner is a Fellow of the Society for the Scientific Study of Religion, and of the Society for the Scientific Study of Sexuality.

Contact us: E: kieteam@kiecon.org
www.kiecon.org; © 2023 KIE Conference

KEYNOTERS FOR, & CHAIR OF THE 2023 TORRANCE ROUNDTABLE



Chair: Dr Larry Keiser

Education, NSF, and private foundations and organizations in collaboration with other Drexel faculty and external partners to design and implement educational partnerships. These projects include designing/implementing national and regional school/district partnerships in support of alternative preparation pathways for K-12 teachers; professional development activities for improving pre-service and in-service teachers' STEM content knowledge and pedagogy; designing/implementing school leadership improvement programs; better integrating appropriate technology into PreK-16 teaching and learning processes; and promoting creativity and innovation in schools, the workplace and in life.



Keynoter: Dr Kobus Neethling

Kobus Neethling, PhD, is an internationally renowned leader in the fields of whole brain thinking and creative behavior. After doing post-doctoral work with Dr. Paul Torrance, he developed the Neethling Brain Instruments, a battery of whole brain assessment tools used in more than 80 countries across the world. With over 80 books and 9 television series

under his belt, Dr. Neethling is a go-to-expert for guidance on how to maximize potential through the optimization of the entire brain. Deeply committed to improving the human condition, he worked with Nelson Mandela to train his office staff in creative behavior and cognitive power and is the Founder and President of the South African Creativity Foundation.



Keynoter: Dr Bonnie Cramond

Bonnie Cramond, Ph.D. Bonnie is Professor Emerita of Educational Psychology and Gifted and Creative Education at the University of Georgia, USA. She was a former Director of the Torrance Center for Creativity and Talent Development. She has published numerous articles, chapters, and a book (another is in the works). A national and international speaker, she has visited over 35 countries working toward infusing creativity into classrooms at all levels. She was honored in 2011 to be invited to give a TEDx Talk on creativity and has gratefully received other international and national honors.

For the complete list of 2023 KIE Conference keynote speakers please visit: www.kiecon.org.

*FRC Transactional Research Lecture Series |Topic: Transformation In Education—What Parents Demand



Speaker: Jeff Westphal

Jeff Westphal is an entrepreneur, author, and Founder of the new venture, MeaningSphere, Inc. He is a recipient of the American Creativity Association (ACA) Champion of Creativity Award and in 2014, served as a panelist for the ACA World Conference, *Creativity in Action*, sponsored by the Drexel/Torrance Center for Creativity and Innovation Lecture Series entitled "Creativity as a Bridge Between Education and Corporation".

Prior to Jeff's role as Founder of MeaningSphere, he served as CEO of Vertex, Inc. As CEO, he spent decades growing and developing Vertex into a global leader in tax software. He maintained an eye on transformation in the tax industry while leading a developmental culture within the company and guid-

ing Vertex to 10-fold growth during his twenty-year tenure as CEO, serving fortune 500 companies like Apple and Starbucks. Vertex went public on the Nasdaq exchange in July 2020. Jeff served as Chairman of the Board from 1996 to 2020. Vertex undertook an IPO on the Nasdaq exchange in July 2020.

Jeff became intent on using his resources and experience to advance transformational change toward deeper meaning in business, education and autism. His new venture, MeaningSphere, Inc., looks to support people seeking to discover, create and pursue deeper meaning in their work.

Jeff is also a close collaborator with Dr. Fredricka Reisman (Drexel University) where together they created the Drexel University Freddie Reisman Center for Translational Research in Creativity and Motivation.

Bonnie Benjamin-Phariss is the Managing Director for the Westphal Family Philanthropy. Bonnie brings decades of experience leading

initiatives to support transformative impact, connecting public and private sectors to drive purpose-driven change. She is an award-winning production executive with a proven track record of leveraging storytelling and powerful alliances to engage, change opinions and lead people to action. Bonnie ran Vulcan Productions, the independent media company founded by Microsoft co-founder Paul G. Allen. She was part of the team who created and ran the Disney Institute in Orlando, Florida. Prior to that, she was Director of News and Public Affairs at WNET in New York.



Speaker: Bonnie Benjamin-Phariss

*FRC—Drexel University Freddie Reisman Center for Translational Research in Creativity and Motivation.

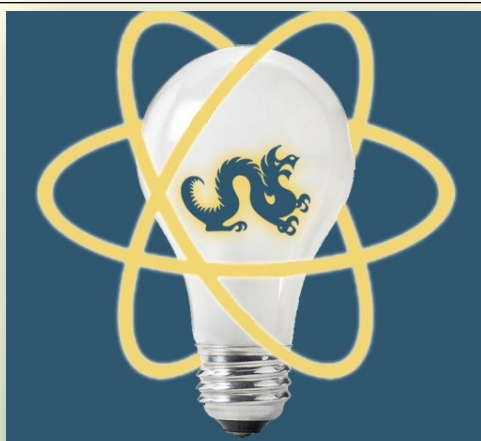
REISMAN DIAGNOSTIC CREATIVITY ASSESSMENT (RDCA) SIG

Conference participants are cordially invited to attend the **Reisman Diagnostics Creativity Assessment Special Interest Group (RDCA SIG)** that will take place on Tuesday 25 July 2023. Presentations will be Moderated by co-developer of the RDCA tool, Dr Larry Keiser, Clinical Assistant Professor and Director of Special Projects & Certification Officer at Drexel University.

The Reisman Diagnostic Creativity Assessment (RDCA) is a free downloadable Apple App (via iTunes) which

captures eleven creativity research-based factors such as originality, fluency, flexibility, tolerance of ambiguity, resistance to premature closure, risk taking, intrinsic and extrinsic motivation, divergent and convergent thinking, and elaboration.

Some items in the RDCA extends Torrance Tests of Creative Thinking (TTCT), which is predicated, in part, on the work of Joy Paul Guildford. The RDCA SIG honours Dr Reisman's work.



TUESDAY 25TH JULY 2023, 14:30-15:30 (TIME IN SPAIN)

TOPIC: "History and Use of the RDCA and RDMA?"

SIG PANELLISTS



Panellist: Craig Bach, PhD, Drexel University, USA

Craig Bach is an associate research professor at Drexel University in the School of Education and Director of Evaluation for the Freddie Reisman Center for Translational Research in Creativity and Motivation and the Education Passport. An expert in learning assessment and analytics, accreditation, program evaluation, and instructional technologies, Craig is an education leader with demonstrated success developing impactful and relevant education products and services across a broad range of educational types and settings, including early learning, K-12 and post-secondary settings as well as programs in for-profit, public and private institutions. Craig has focused his efforts on developing sustainable, data-informed, value-add approaches to challenges facing institutions in response to demographic and market shifts and the current COVID-19 pandemic crisis. Prior to his current role, Craig was Goddard Systems Inc.'s vice president of education, where he led the educational programming and training for Goddard Schools. He also served as Drexel University's vice provost for institutional research, assessment, and effectiveness, and as vice president of the Office of Institutional Effectiveness at Kaplan Higher Education. Craig holds degrees from the University of Texas at Austin in mathematics and philosophy, and a

master's degree in mathematics and a doctorate in logic and the methodology of science from the University of California, Berkeley. He also serves as a member of The Goddard School's Educational Advisory Board, a team of acknowledged experts in various fields of early childhood education.

Mitch Marcello is the founder and director of Imago Design and Innovation Firm. Driven by the belief that a complex world needs innovative solutions, Mitch is passionate about assisting leaders, teams, and organizations to understand and realize their creative potential. With a wide portfolio of innovation work, Mitch has assisted communities, colleges, architecture firms, law firms, and more to build workplaces where innovation occurs consistently. As an international speaker, Mitch challenges audiences to merge both science and art while contemplating the area of innovation. He holds a BFA from Carnegie Mellon University, a Master of Science in Creativity and Innovation from Drexel University, and is the recipient of the Fredricka K. Reisman award in Creativity and Innovation.



Panellist: Mitch Marcello, Imago Design & Innovation



Pete Ophoven has been teaching problem solving strategies, project management and business marketing at Bellevue College since 2015. A recent graduate from Drexel University Master's in Creativity and Innovation. He is the founder of the "Everyday Creativity" project and completed his autoethnography of Everyday Creativity studying the effects of creativity practices everyday for thirty days. Pete recently presented his work at the 2021 KIE Conference. Pete is passionate about evangelizing the creative potential in all people. He just recently completed a three-part workshop at Bellevue College in cultivating creativity in the classroom. He is currently a member of the advisory board for the Freddie Reisman Center for Translational Research in Creativity and Motivation. Pete is the founder and co-owner of Right Brain Tech Support, Inc. an information systems consulting company specializing in strategic IT development. He is married with 2 children (parenting being one of the greatest of creative expressions) and lives in Seattle Washington. pete@peteophoven.com.



Panellist & Co-Founder of RDCA: Dr Fredricka Reisman, Drexel University, USA



Panellist/ Moderator: Dr Larry Keiser, Drexel University, USA